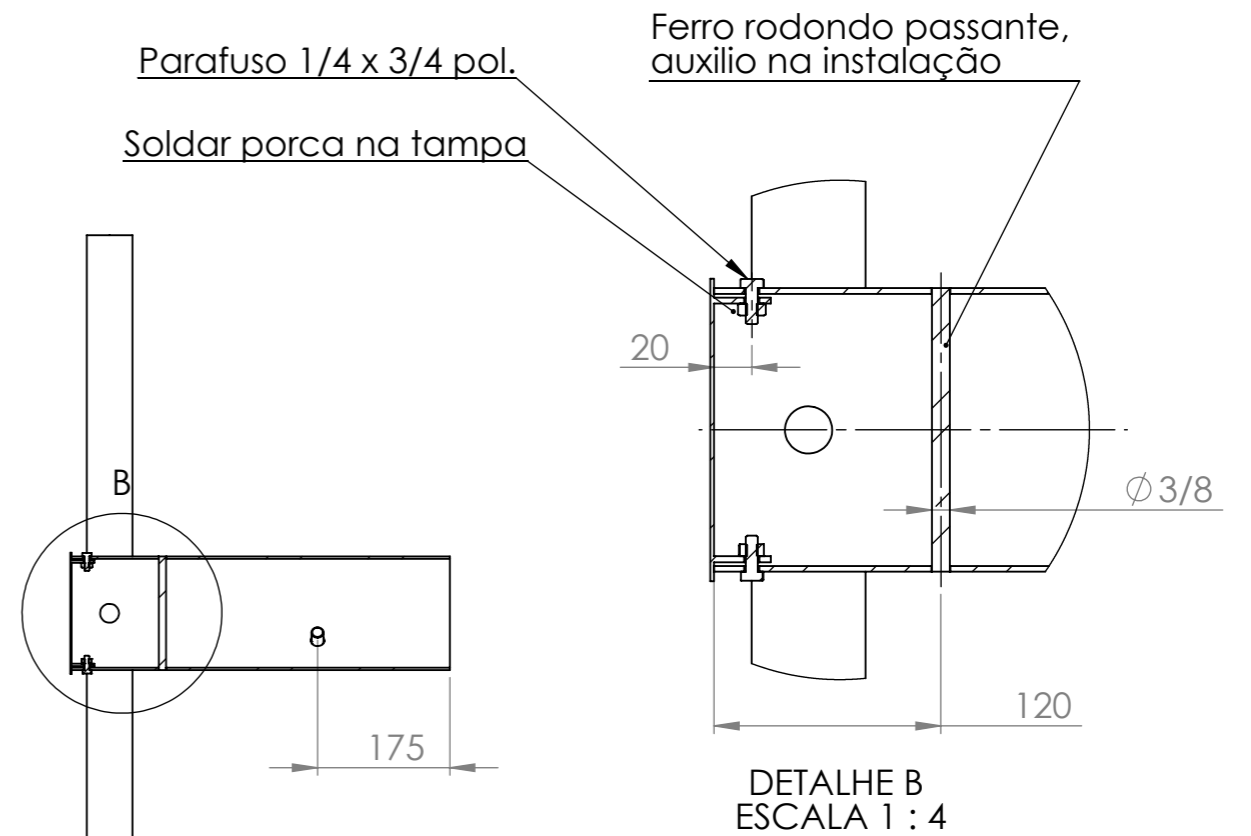
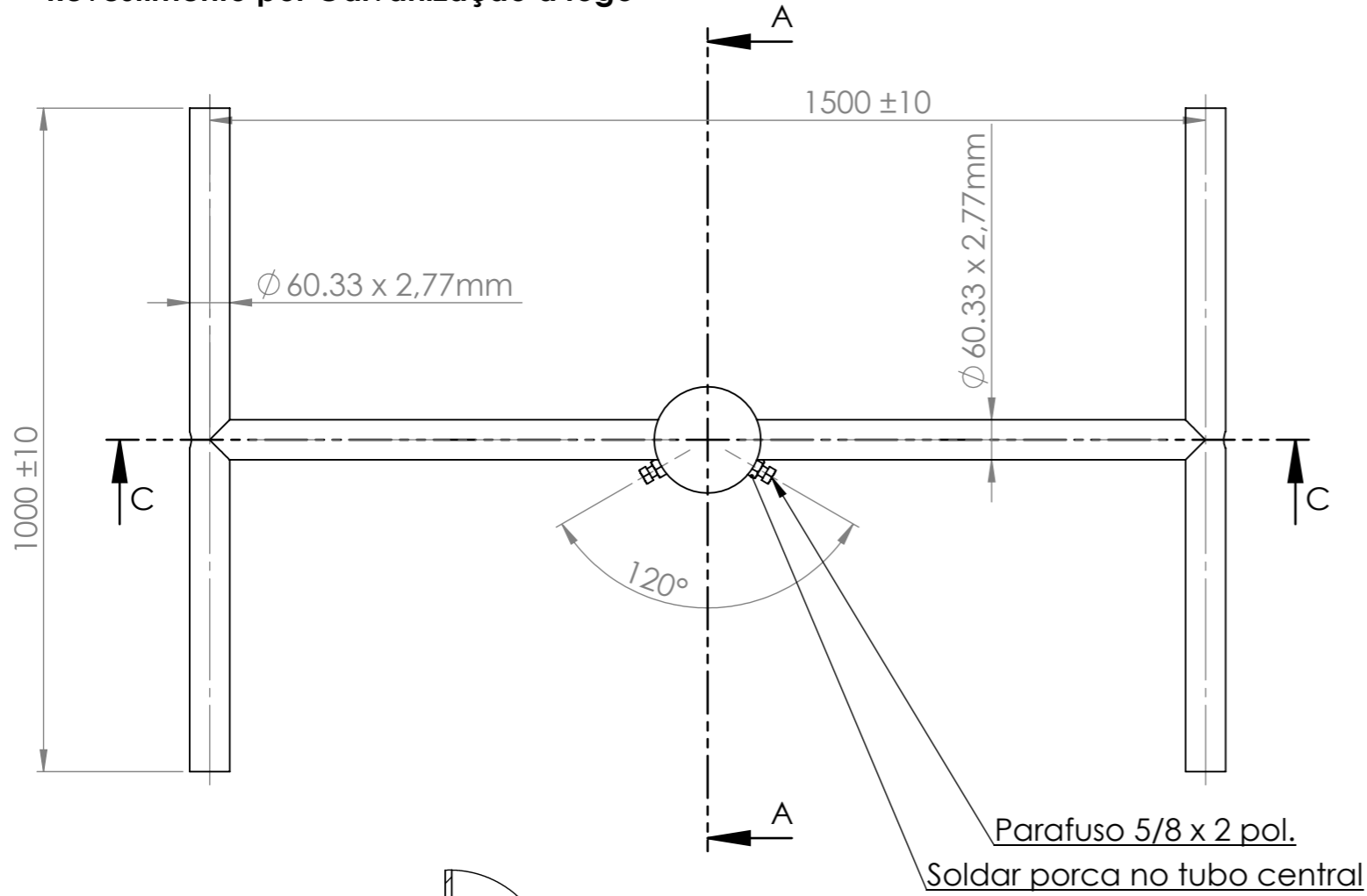
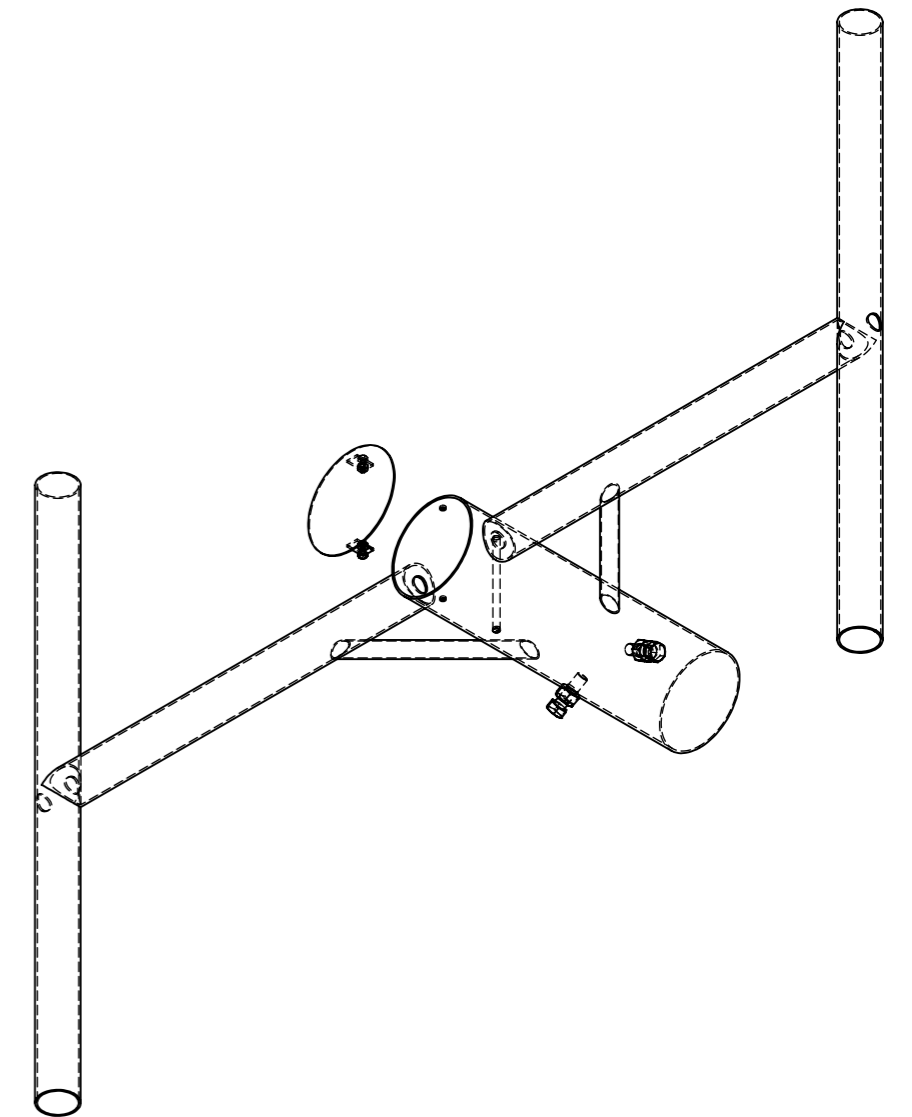
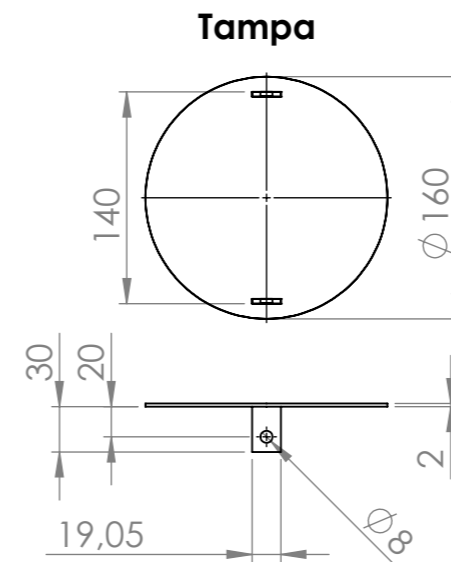
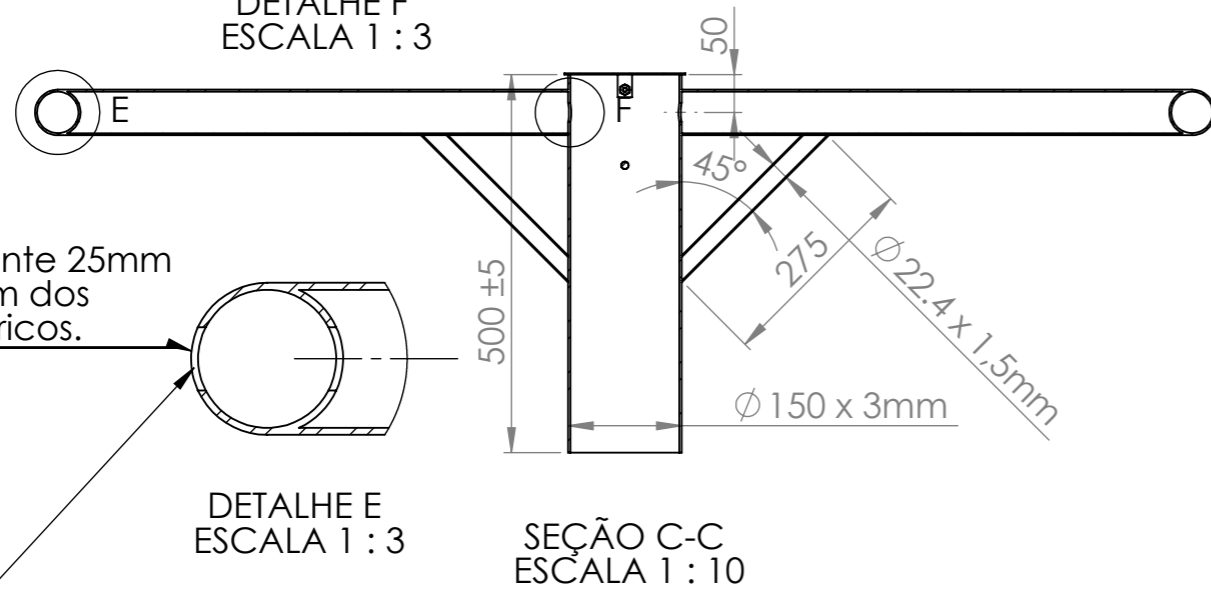
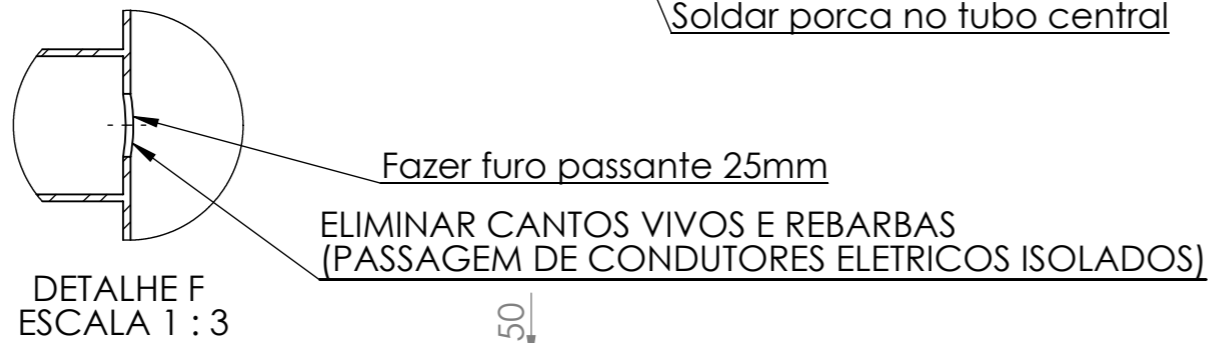


Suporte Petala
Revestimento por Galvanização a fogo



SEÇÃO A-A
 ESCALA 1 : 10



Fazer furo passante 25mm para passagem dos condutores elétricos.

DETAILHE E
 ESCALA 1 : 3

ELIMINAR CANTOS VIVOS E REBARBAS (PASSAGEM DE CONDUTORES ELETRICOS ISOLADOS)